



ELECTROLUX OUTDOOR PRODUCTS

brand	FLYMO
-------	-------

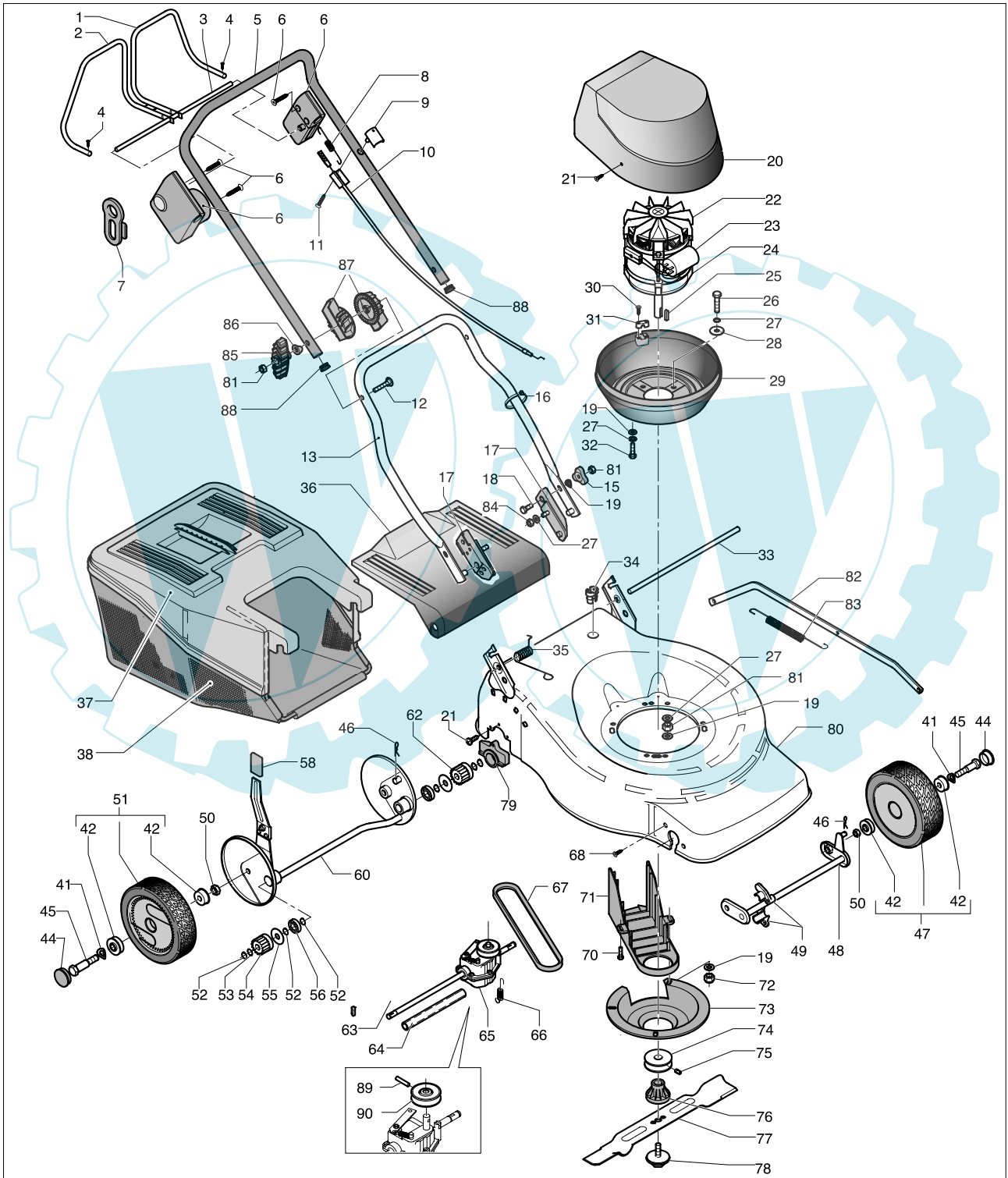
date	JAN/02	SHEET 1/2
------	--------	-----------

Model

Product number

FL 460 DEL

9538782-08



The Electrolux Group. The world's No.1 choice.

Ihr Ersatzteilspezialist im Internet



ELECTROLUX OUTDOOR PRODUCTS

brand	FLYMO
-------	-------

date	JAN/02	SHEET 2/2
------	--------	-----------

FL 460 DEL

Pos	PN ELX	PN MEP	Q.ty	Note	Pos	PN ELX	PN MEP	Q.ty	Note
1	531206003	10146393	1		46	531206653	10281400	2	1,8 x 33
2	531205995	10146293	1		47	531210793	0914128V	2	D170/26
3	531206004	10146403	1		48	531205051	10120290	4	
4	531206006	10146420	2	TCTC D.3,9x13 FZ	49	531205057	10120473	4	
5	531211005	10146903	1		50	531207978	20101700	2	M10 H8 UNI 5588-6S ZB
6	531207082	10398400	1	9,5A	51	531210794	0917262V	2	D190/26
7	531207051	10393103	1		52	531208772	20655800	6	D.12E DIN 471
8	531206005	10146410	1		53	531208859	20761300	1	D.12,4x17x0,3
9	531205978	10146203	1		54	531205045	10120160	2	DX
10	531205990	10146250	1	1040/1154	55	531207847	10831200	2	D.12/34/0,7 ZB
11	531208217	20135730	1	TC.TC 2F D 5x25	56	531208778	20657600	1	D.12/28/8 6001/2RS
12	531205842	10141270	2	TTSQ M8X75 (Z.) GAMBO D.8	58	531207986	20107203	1	
13	531206040	10146803	1		60	531205101	10121090	1	
15	531204923	10114303	2		62	531205046	10120170	1	SX
16	531205581	10135600	1	160X4,5	63	531205108	10121160	2	"S" 5x5(-0,05) x19,2 DIAG
17	531207045	10391303	2		64	531207693	10766103	1	12x284
18	531207071	10396600	2	TE M8x30 UNI 5739-8,8-ZB	65	531204755	09767400	1	
19	531204922	10114200	9	8x16x1,5 ZB	66	531206182	10155210	1	
20	531210796	1013551V	1		67	531207280	10548500	1	Z 27 3L 285
21	531208216	20135720	4	TCTC 2F D.5x16 AC	68	531208844	20734900	4	TCTC 4,3x16 FIX ZB
22	531208001	20117683	1	14,3	70	531207856	10831800	3	TEFR 5x10 ZB
23	531207721	10781700	1	20MF	71	531205047	10120183	1	
24	531207685	10740000	1	1800W	72	531208599	20404900	3	M8 H10 UNI7473-ZB
25	531207041	10384800	1	4x4x22	73	531206007	10146433	1	
26	531207044	10390800	3	TE M8x40 UNI 5737-8,8-ZB	74	531205994	10146280	1	
27	531207981	20106200	12	D.8E DIN 6798	75	531205998	10146320	1	M5X10 UNI 5929-67
28	531204904	10066300	3	8x24x2	76	531205993	10146273	1	
29	531207069	10396303	1		77	531205072	10120680	1	
30	531207065	10396100	2	TCTC 3,9x22 FIX ZB	78	531207038	10380603	1	
31	531207043	10389103	1	D.8/5	79	531205944	10146093	2	
32	531208586	20385300	4	TE M8x25 UNI 5739-8,8-ZB	80	531210828	1017268V	1	
33	531205060	10120530	1		81	531207982	20106300	7	M8 H8 UNI 5587-6S ZB
34	531205557	10135413	1		82	531205069	10120653	1	
35	531205999	10146330	1		83	531205056	10120460	1	
36	531205981	1014621V	1		84	531206618	10240300	2	M8 H5 UNI 5589-6S ZB
37	531210785	1014611V	1		85	531205840	10141253	2	8M
38	531208306	20146303	1		86	531205841	10141263	2	D.8
41	531206644	10275100	4	UNI8840-B12(- 13/24/0,8)	87	531205839	10141243	4	D.22
42	531205214	10121900	8		88	531208950	20833303	2	
44	531210795	1011480V	4		89	531207703	10768400	1	
45	531205042	10120090	4		90	531208899	20768203	1	